

ORACLE®
FUSION MIDDLEWARE 11g

ORACLE BPEL Process Manager



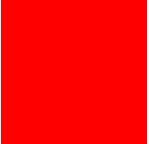
ORACLE®



Dr. Jens Hündling
Senior Systemberater
Oracle Direct
Potsdam

Java User Group Saxony
Technische Universität Chemnitz

24. Juni 2010



The following is intended to outline our general product direction. It is intended for information purposes only, and may not be incorporated into any contract. It is not a commitment to deliver any material, code, or functionality, and should not be relied upon in making purchasing decisions. The development, release, and timing of any features or functionality described for Oracle's products remains at the sole discretion of Oracle.

Agenda

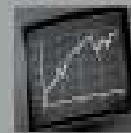
- Übersicht Oracle Fusion Middleware
- Oracle BPEL Process Manager
 - Architektur der Engine
 - Live Demo
- Diskussion



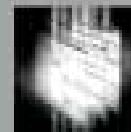
Oracle Fusion Middleware



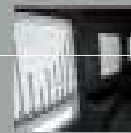
User Interaction



Enterprise Performance Management



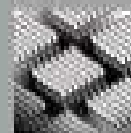
Business Intelligence



Content Management



SOA & Process Management



Application Grid



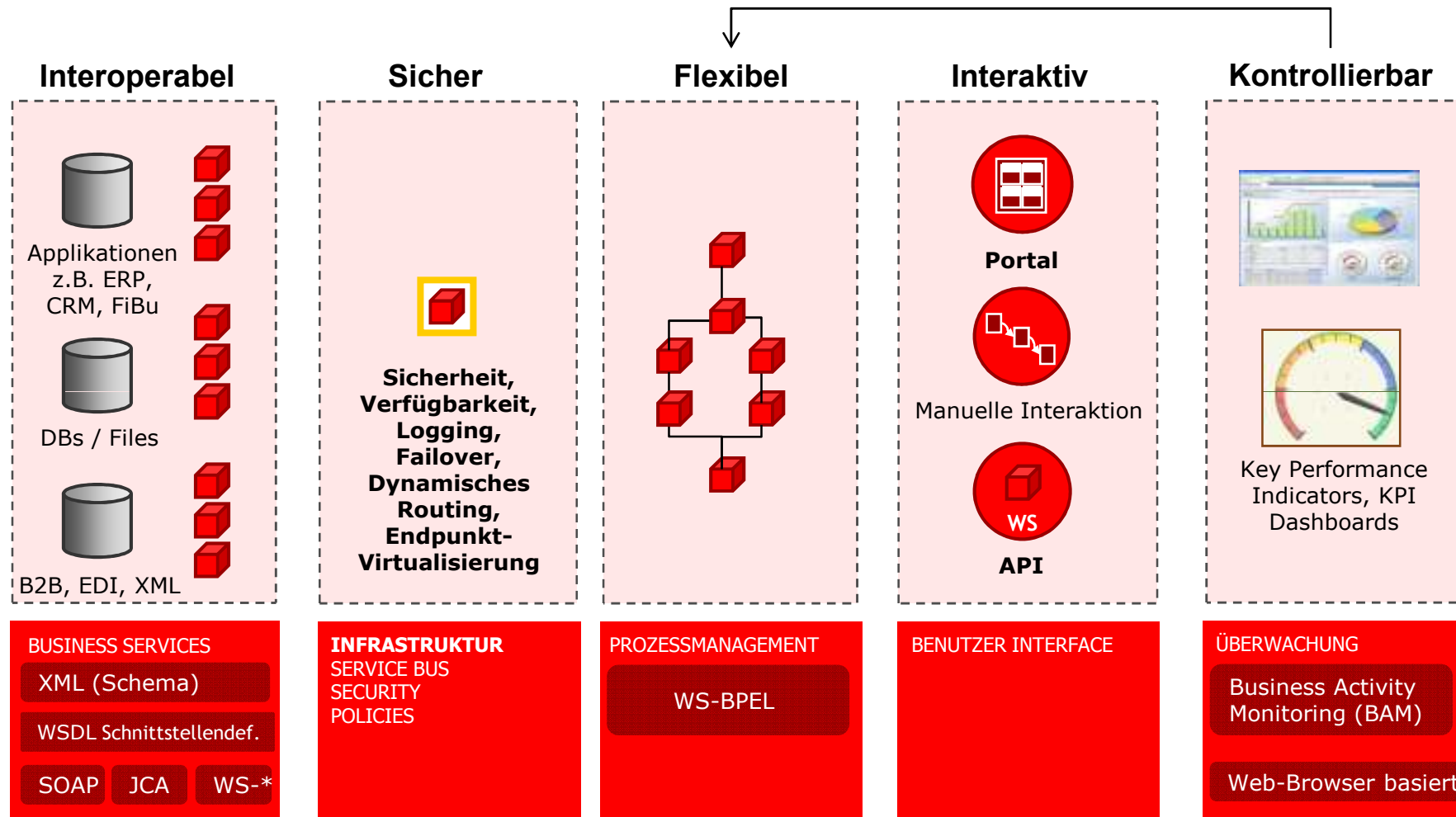
Enterprise Management



Identity Management

Architekturüberblick

Integration und Standards



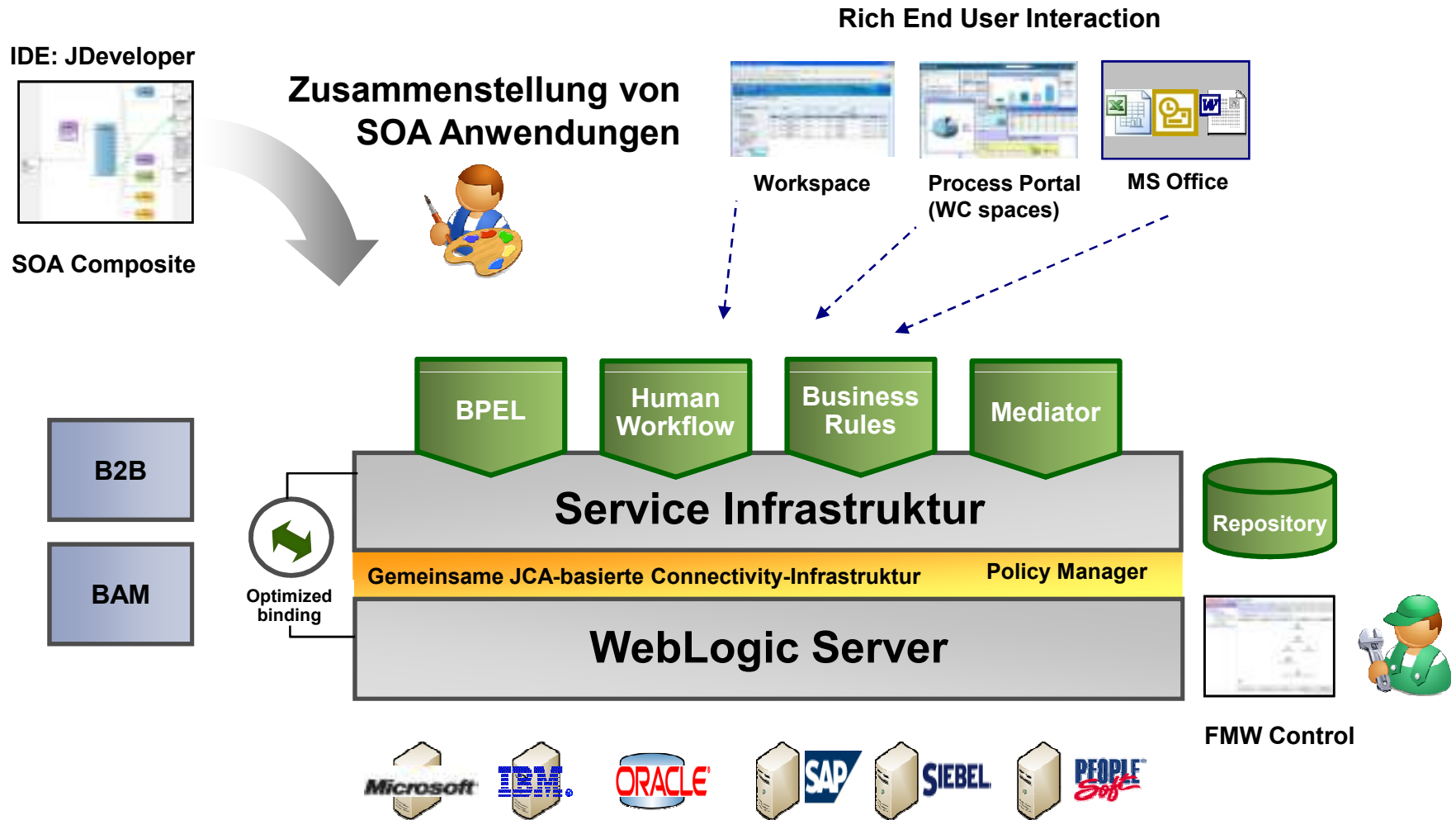
ORACLE®

SOAP: Web Services Kommunikationsprotokoll
JCA: Java Connector Architecture

BPEL: Business Process Execution Language
XSLT: XML Transformation

Vereinheitlichte Service Plattform

Fusion Middleware 11g Architektur-Skizze



Agenda

- Übersicht Oracle Fusion Middleware
- **Oracle BPEL Process Manager**
 - Architektur der Engine
 - Live Demo
- Diskussion



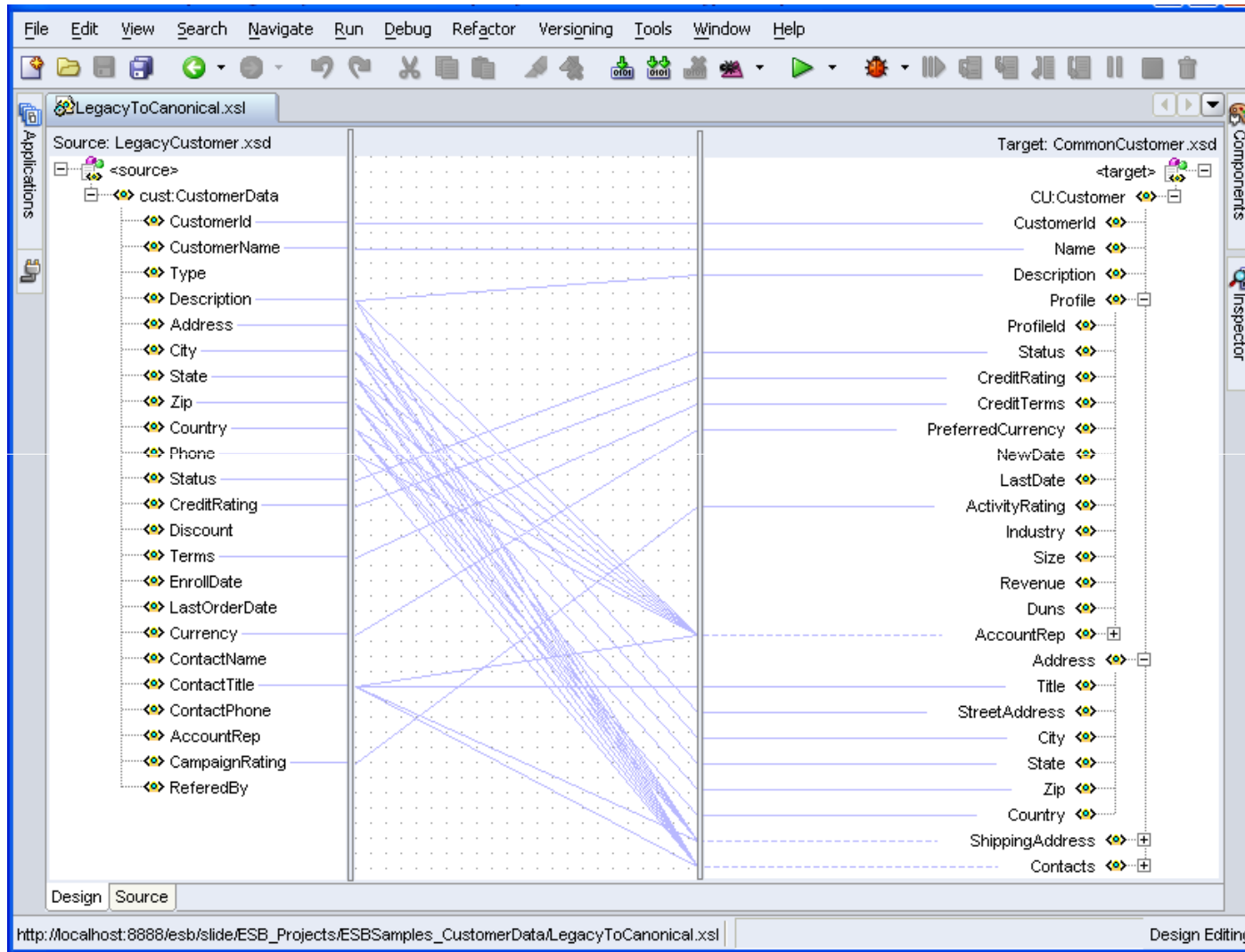


Live Demo

- Designer im JDeveloper



Oracle XSLT Mapper



Live Demo

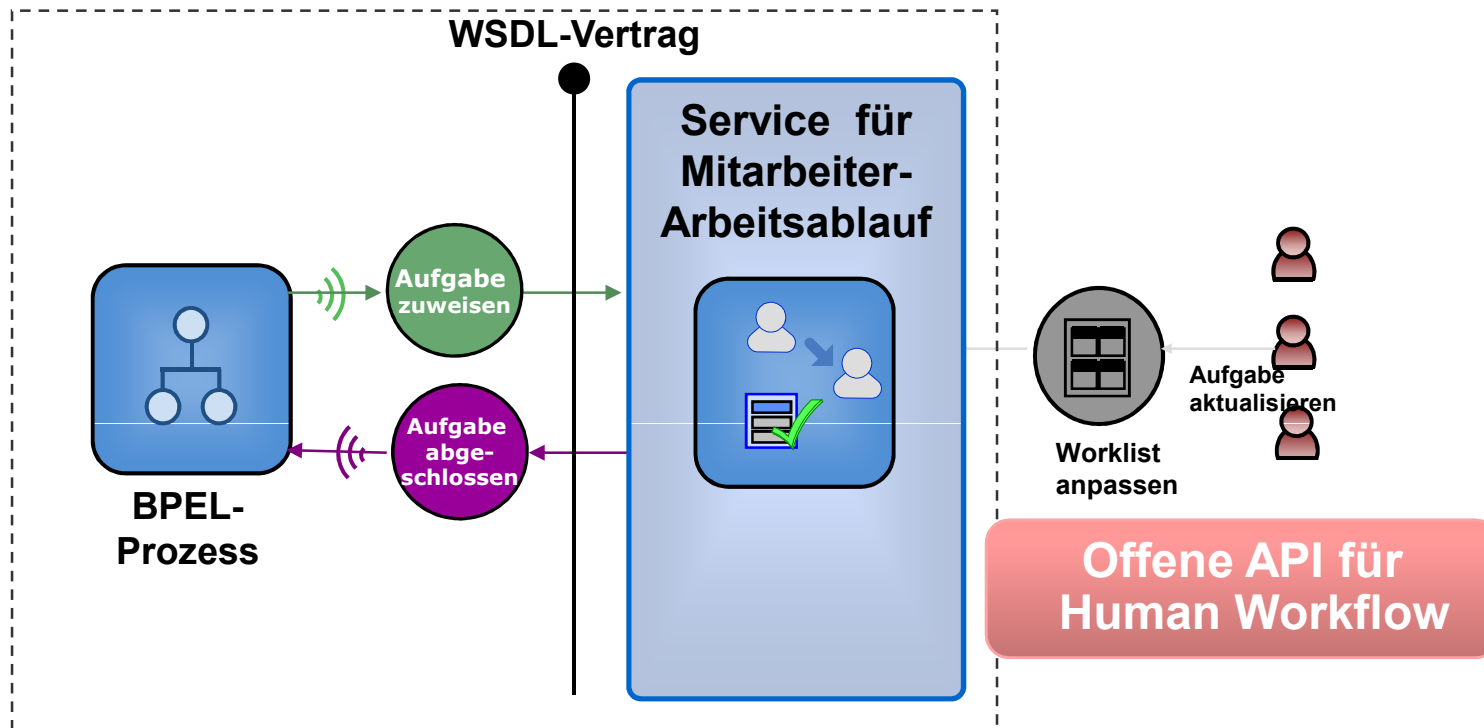
- Designer im JDeveloper
- Monitoring von Instanzen



Human Workflow

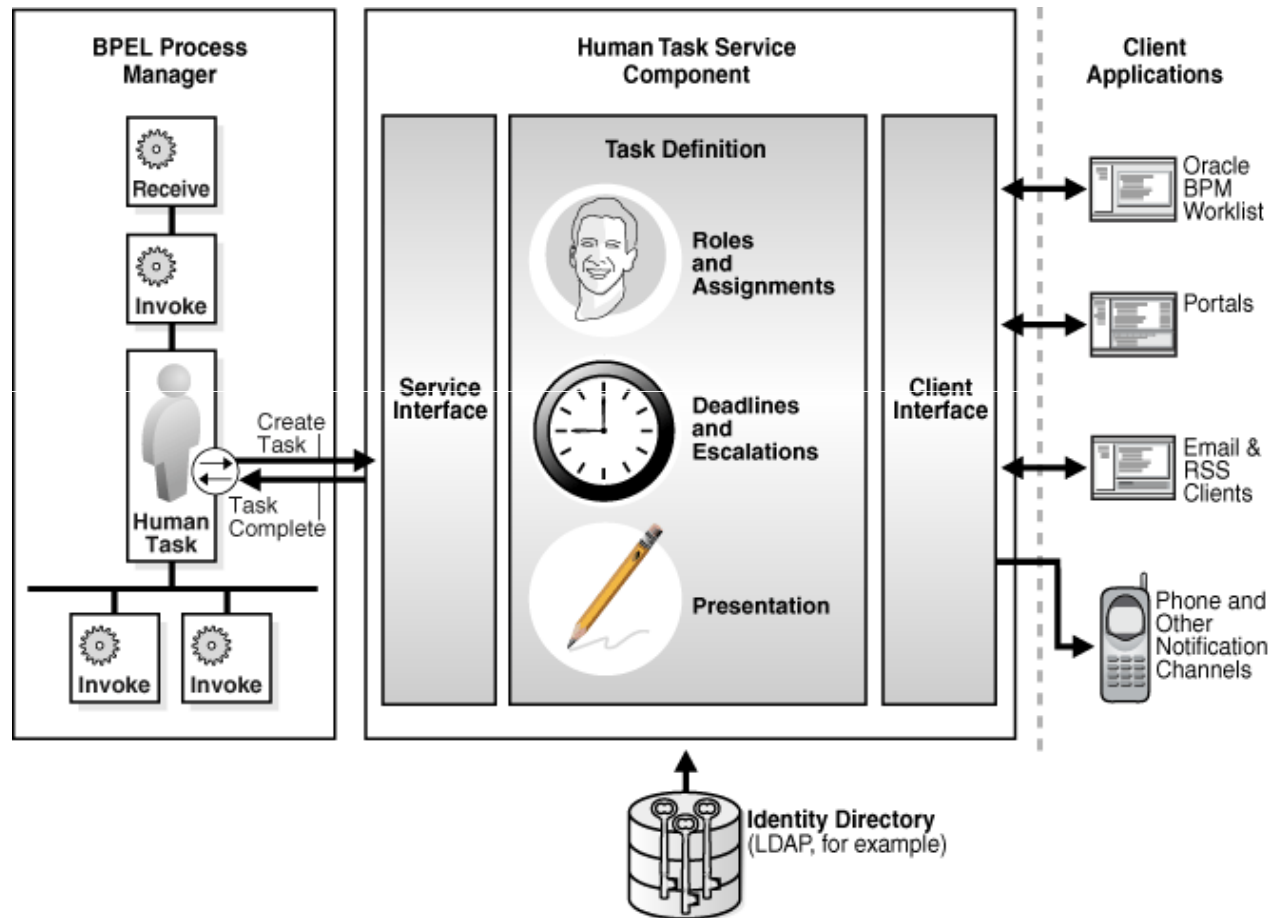


Der Human Workflow als „Service“ im BPEL Process Manager



✓ Ein auf Metadaten beruhender gemischter Webservice für den Mitarbeiter-Arbeitsablauf, der selbst flexible Komponentendienste enthält und mit der Prozess-Engine interagiert.

Human Task Service Komponente



Link zur Doku: http://download.oracle.com/docs/cd/E14571_01/integration.1111/e10224/bp_introhwf.htm#CJHBDIJI



Schnittstellen und APIs

- BPEL Engine und Human Workflow
 - Offene und vollständig dokumentierte API
- Dokumentation
 - Startpunkt: Developer's Guide for Oracle SOA Suite
 - http://download.oracle.com/docs/cd/E14571_01/integration.1111/e10224/toc.htm
 - Oracle SOA Suite Java API Reference (Javadoc)
 - http://download.oracle.com/docs/cd/E14571_01/ref.htm
 - Human Workflow
 - Workflow Services Java API Reference for Oracle SOA Suite 11g Release 1 (11.1.1)
http://download.oracle.com/docs/cd/E14571_01/apirefs.1111/e10660/toc.htm
 - SOA Suite JavaDoc
 - <http://www.oracle.com/technology/products/soa/soasuite/collateral/apidocs/index.html>
 - (10.1.3.x):<http://www.oracle.com/technology/products/ias/bpel/htdocs/apidocs/101340MLR4/index.html>



Vielen Dank für ihre Aufmerksamkeit



Jens.Huendingling@oracle.com

Oracle Technology Network:
<http://otn.oracle.com>

Human Workflow:
<http://www.oracle.com/technology/products/soa/hw/>

Vereinheitlichte Service Plattform

Fusion Middleware 11g Architektur-Skizze

